



## PROJECT UPDATES

There are several major infrastructure projects happening throughout the City of Loveland, including the addition of a turn lane at the State Route 48/West Loveland Avenue intersection (pictured above).

Did you know you can stay up to date by visiting [LovelandOH.gov](http://LovelandOH.gov)? Check back often to see how projects are taking shape.

## Pedestrian Access: A City Priority

Improving walkability in the city is a goal of the city's 2022 Comprehensive Master Plan, and residents will begin seeing new sidewalk connections.

As part of a three-phase project, new sidewalks were added along the east side of Loveland-Miamiville Road from State Route 48/Oakland Road to Sugar Tree Lane. Once complete, sidewalks will connect three neighborhoods to two schools and Historic Downtown.

Next up, City Council awarded a contract to add sidewalks along East Loveland Avenue from the nature preserve to the new Clermont County park located on the Grail Property. Similarly, funding efforts are underway to connect the other side of the new Clermont County park with the White Pillars neighborhood — sidewalks are proposed along State Route 48/Oakland Road.

Meanwhile, city staff is applying for grants to install sidewalks along Osage Drive to connect a large portion of the Loveland Heights to Loveland High School.

Also, the city hired an engineering firm to prepare a plan for sidewalks along State Route 48 to connect Warren County residents to Historic Downtown.

Lastly, the Loveland-Madeira Road Corridor Revitalization Project will include pedestrian connections to the Stoneybrook neighborhood, River Ridge Apartments, Deer Creek Apartments, and beyond.

***Bike Trail Bridge Closure...***  
***Read more on Page 6***



# From the Mayor: A New Parking Lot (and More!)

In 2019, the city acquired 1.15 acres to add parking in Historic Downtown. Multiple grant applications were submitted seeking funding to build a proposed 270-space garage. Although \$1.15 million was secured, additional funding still was needed. The city applied for three more grants, but ultimately was denied funding.

Realizing that there were few grants available and that the debt needed to complete the project was not fiscally responsible, City Council decided it would be best to pivot — utilize the grant funding already secured by constructing a 147-space surface parking lot.

The lot will create a new access point into downtown from State Route 48. Additionally, the lot will include lighting, landscaping, and a pedestrian path. Once a bid contract is approved by City Council, demo will begin. The lot is anticipated to be done by mid-2024.



Surface parking lot layout

## Get Involved

I invite you to be a part of this project by helping us *Name the New Parking Lot!* We are holding a campaign to brainstorm a unique name. Submit your best idea by Nov. 28, 2023. Scan the QR code below to enter online, or visit [LovelandOH.gov](http://LovelandOH.gov) to download an entry form. Entry forms also can be picked up at City Hall. Good luck!

## CITY COUNCIL



**Kathy Bailey - Mayor**  
[kbailey@LovelandOH.gov](mailto:kbailey@LovelandOH.gov)



**Ted Phelps - Vice Mayor**  
[tphelps@LovelandOH.gov](mailto:tphelps@LovelandOH.gov)



**Andy Bateman**  
[abateman@LovelandOH.gov](mailto:abateman@LovelandOH.gov)



**Kent Blair**  
[kblair@LovelandOH.gov](mailto:kblair@LovelandOH.gov)



**John Hart**  
[jhart@LovelandOH.gov](mailto:jhart@LovelandOH.gov)



**Neal Oury**  
[noury@LovelandOH.gov](mailto:noury@LovelandOH.gov)



**Kip Ping**  
[kping@LovelandOH.gov](mailto:kping@LovelandOH.gov)

## More Downtown Projects

Additionally, the following downtown projects are planned for 2024:

- Widening of Harrison Avenue (*See Page 11 for more information*)
- Expansion of the plaza area adjacent to the Town Clock
- Realignment of the existing parking lot adjacent to City Hall
- Installation of traffic signals at West Loveland Avenue's bike trail crossing for both vehicles and pedestrians/bikers
- Installation of a second seating area and extension of walking paths in Nisbet Park

This is an exciting time for Historic Downtown, and I am proud of how city staff continues to secure grant funding to complete important infrastructure projects. While we all will have to deal with dust during construction, these projects will make our downtown more pedestrian-friendly, add much-needed parking, improve traffic flow, and continue toward our goal of making Nisbet Park the finest park along the entire Little Miami Scenic Bike Trail.

Stay updated on the progress of all city projects by visiting [LovelandOH.gov](http://LovelandOH.gov). Thank you for supporting the City of Loveland!

— Mayor Kathy Bailey



Name the New  
Parking Lot!



# Bridge Study: Survey Results & Next Steps

The city is conducting a feasibility study for a project to address transportation issues within Historic Downtown, including travel delays and congestion on and near the West Loveland Avenue Bridge. As part of the study, a survey was conducted June 15 - July 17, the first public engagement effort to aid in the creation of traffic solutions.

The survey received a total of 1,769 responses — the vast majority received from residents of the 45140 zip code. More than 90% of respondents said they travel within the vicinity of Historic Downtown on at least a weekly basis. Among the survey's key findings:

## Congestion Causes

- 1** Lack of alternate routes in Loveland  
(Selected 1,326 times)
- 2** Not enough traffic lanes  
(Selected 922 times)
- 3** Lack of parking  
(Selected 763 times)

## 5 - 7 p.m.

86.7% of respondents reported traffic is heaviest at this time of day

## 5 - 10 min.

53.4% of respondents said delays add 5-10 minutes to their commute



Read all survey results.

Stay tuned for details about 2024 open houses to review proposed solutions & provide feedback.

## BUSINESS SPOTLIGHT

### Loveland Hardware

131 Broadway St.



Dale Eads founded Eads Fence Company in 1980. As business grew, he needed more space and bought the hardware store property in 2005. The building was constructed in 1890 and housed several businesses, including hardware stores, over the years. In 2010, Eads purchased Hader Hardware, moving it from Loveland-Madeira Road to Broadway Street — thus, the beginning of Loveland Hardware General Store. The store expanded quickly, offering paint, hardware, and supplies for the fence business.

In 2020, Eads began leasing space to Mile 42 Coffee. Customers often say Loveland Hardware is one of the few places to buy both a latte and a chainsaw! Besides hardware, the store carries many unique products such as Stihl equipment, pet supplies, local goods like honey and soap, and a soda selection with more than 80 varieties. Visit soon for fall mums, Christmas trees, and wreaths.

### Newly Opened Businesses

Spring - Fall 2023

**AutoZone**  
350 Loveland-Madeira Road

**BentOn**  
851 Loveland-Madeira Road

**Better Blend**  
201 W Loveland Ave.

**Goodwill** (Grand Reopening)  
330 Loveland-Madeira Road

**Pet Wants Loveland**  
110 S Second St.

**Teak Loveland Sushi & Thai**  
110 S Second St.

**Ziehler Lawn Care**  
100 Commerce Park Dr.





# A NEW STATION 63

## LSFD News



In 2024, construction will begin on a modern downtown fire station for the Loveland-Symmes Fire Department.

Historic Downtown's Station 63 fire house at the intersection of East Loveland Avenue/State Route 48 will be relocated to 220 E. Loveland Ave. At this site, a modern fire station will be constructed.

"I would like to thank the citizens' working group who helped evaluate the new location. The station will provide much needed safety upgrades for our firefighters and will help us provide service to the community for decades to come," said LSFD Chief Otto Huber.

The new station will be one-third larger, have multiple road entry points (O'Bannon Avenue and East Loveland Avenue), and feature more lot space to maneuver equipment.

At more than 10,000 square feet, the station will feature two pull-through apparatus bays, one back-in bay, training rooms, ample storage for fire and EMS equipment, full living quarters, office space, and public restrooms. The building will be one story with garage door heights of 14 feet.

Financially, it did not make sense to renovate the existing firehouse. Multiple safety upgrades were needed.

For instance, today's code would require an elevator to be installed — a huge expense for a building lacking other needed modern amenities. The current station has no pull-through bays, and its intersection location poses challenges.



"There were many reasons to rebuild the station, but the key reason came back to response time. Having pull-through bays and more access points dramatically can improve crews' response," explained Cory Wright, Assistant City Manager.

Typically, government buildings, including fire stations, are not eligible for state or federal grants. However, city staff obtained a unique loan to fund the estimated \$5.4-million station.

Staff applied for the United States Department of Agriculture's Community Facility (CF) Loan Program, which provides funding for essential community facilities at competitive rates.

The CF Program's interest rate could be nearly 1.5% less than the rate the city would secure utilizing standard bond financing. When this is coupled with the project's estimated cost, the savings over the life of the loan could be substantial — estimated at more than \$1 million.

By securing a competitive interest rate, the projected savings will allow LSFD to stretch out fire levies as much as possible.





## Bike Trail Closure

The Ohio Department of Natural Resources (ODNR) is replacing the pedestrian bridge on the Little Miami Scenic Trail over O'Bannon Creek, just north of Nisbet Park. The construction closure is planned for Oct. 1, 2023, through May 15, 2024. The trail remains open in the southbound direction toward Camp Dennison and Milford.



*Park Here, Start Here, Stay Here. Get trip tips for heading south on the trail.*



## Apply to Serve

Do you want to get involved with your community? The city is seeking citizens to fill current committee openings. Through Nov. 30, applications are being accepted on areas ranging from arts to finance. Visit [LovelandOH.gov/212/boards-commissions](https://LovelandOH.gov/212/boards-commissions) or contact [mclark@lovelandoh.gov](mailto:mclark@lovelandoh.gov).



*Complete application.*



## Fresh Site Coming Soon

A redesign is coming to [LovelandOH.gov](https://LovelandOH.gov) in early 2024 to improve the site's functionality. "We want it to be easier for residents to find and download the info they need," explained Krista Rose, Communications Coordinator. Additionally, the redesign will make the site mobile-friendly and ADA-compliant.



*It is important to note the name and web address are not changing. You will continue to use the familiar LovelandOH.gov.*



## That's a Wrap!

The Arts Commission is leading a public art project to decorate the city's traffic signal boxes. Vinyl wraps have been installed on boxes at the intersections of West Loveland Avenue/South Lebanon Road and West Loveland Avenue/Karl Brown Way. The designs were submitted by Dianne Bomar ("Sweetheart Bright") and Katie Burgin ("Trail Town Backpack"). Stay tuned — in winter, details will be announced for the 2024 Call for Art!

## IN OUR PARKS

### Matt Haverkamp Foundation Dog Park

Kiwanis Park - 236 Wall St.

New benches and an agility course are being added to the dog park. These amenities were purchased from the sale of items from Public Works (outdated equipment, vehicles, etc.). City Council earmarked these funds to reinvest in the city.

### Tot Lots

Approx. 310 Cherokee Dr. & 300 Navaho Dr.

Playgrounds have been replaced at the Heights' two Tot Lots.

### Village Anniversary Park

West Loveland Avenue at Englage Road

The park's gazebo has been freshly painted. There is a newly established and growing pollinator garden. See how many different butterflies, bees, and birds you can find!



Village Anniversary Park

## LPD NEWS



## Holiday Crime Prevention Tips

The holiday season is approaching, and LPD would like to share a few reminders about crime prevention...

Have a "9 p.m. Routine" before going to bed. Remove valuables, key fobs, and garage door openers from your car. Lock your home's exterior doors and windows. Close your garage door. Finally, turn on your exterior lights.

During the holidays, more packages may be delivered to your home. **Avoid package theft** by requiring a signature on delivery or leaving specific drop-off instructions. Ask a neighbor to grab deliveries while you're out, or consider having deliveries sent to your work.

Traveling? LPD officers can do a "vacation check" — stopping by your house to make sure everything is OK while you're away. To schedule, call (513) 583-3000 or complete the form at [LovelandOH.gov/requesttracker.aspx](https://LovelandOH.gov/requesttracker.aspx).



### Remember the Four "D's" of Crime Prevention

**Deter** – Lighting, trimmed bushes, alarm-monitoring signs, and video cameras are ways to *deter* criminals.

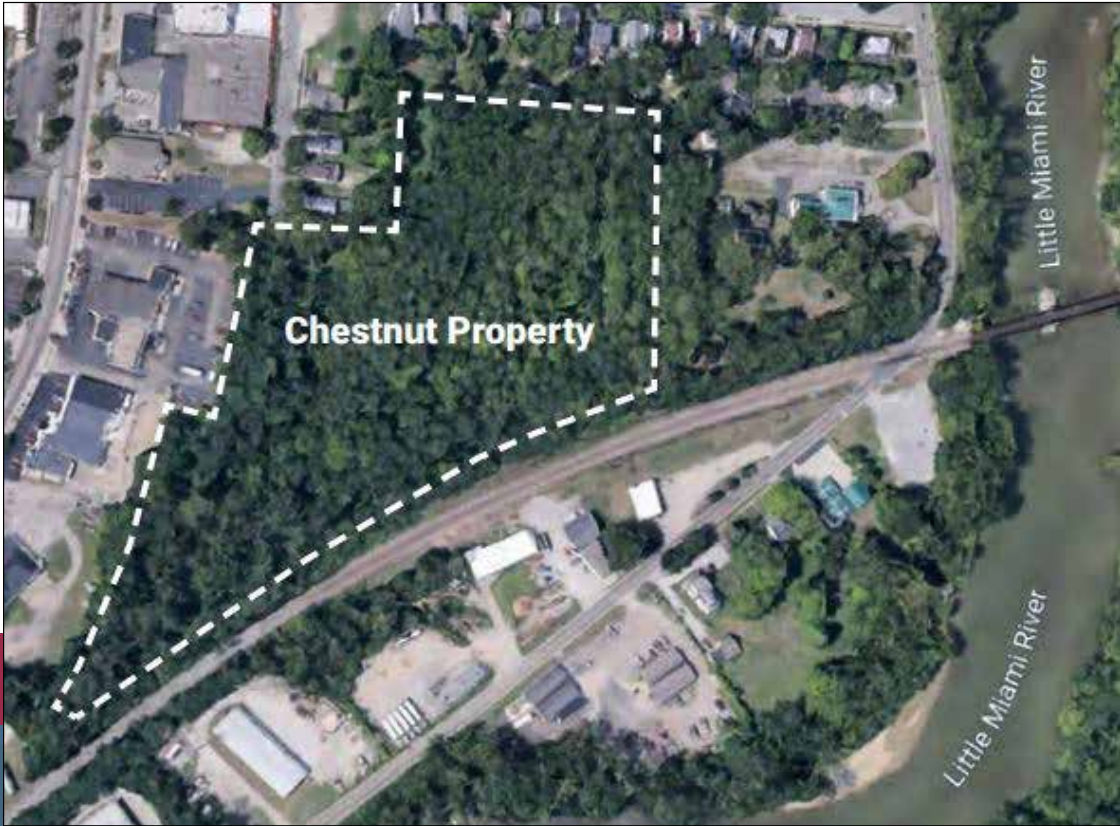
**Delay** – Properly working locks, 3-inch window screws, glass block windows, and similar measures *delay* burglars.

**Deny** – Locking valuables and papers in a safe *denies* access to a thief.

**Detect** – Dogs, alarms, and good neighbors all help *detect* thieves and burglars before they strike.



# Redeveloping the Chestnut Street Property



Clean-up and remediation efforts are complete at the Chestnut Street Property in hopes of redeveloping the 8.33-acre site, which is located between Loveland-Madeira Road and South Riverside Avenue.

Past environmental studies had discovered lead contamination in the soil and Tetrachloroethylene (PCE) contamination in groundwater, along with solid waste requiring disposal.

Clean-up began in June 2022, thanks to city staff obtaining a \$3.3-million grant through the Ohio Brownfield Remediation Program. Crews removed debris,

excavated, and performed groundwater injections to treat the contamination. Going forward, groundwater monitoring will continue on a regularly scheduled basis and be reported to the Ohio Environmental Protection Agency (EPA).

Prior to receiving the grant, remedial services to bring the site to approval from the Ohio EPA had been cost-prohibitive, which limited the city's ability to sell the property or to maintain for city use.

The property has development potential because of its proximity to the Loveland-Madeira Road

Corridor and Historic Downtown, as well as railroad access.

To aid in realizing the site's potential as a community asset, the city purchased the property at 501 Loveland-Madeira Road to create a future access point at Valley View Lane.



## Potential Site Uses

- These renderings highlight potential development options based on approved zoning regulations:
1. Commercial / Retail — Small-scale commercial and retail activity that includes outdoor dining.
  2. Office Park — An office development offering nearby access to I-275.
  3. Flex Office / Industrial — A combination of office, or co-work space, and warehouse infrastructure in one development.

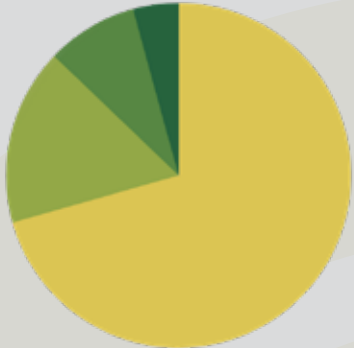


## 2022-2023 GRANTS

25  
GRANT SUBMISSIONS

MORE THAN  
\$4  
MILLION  
AWARDED

## GRANTS BY AREA:



NEARLY  
\$8  
MILLION  
IN PENDING GRANT REQUESTS



# City Partners with US Army Corps on Erosion Study

The U.S. Army Corps of Engineers (USACE) Louisville District is working in partnership with the City of Loveland to find possible solutions to address erosion and unstable streambank concerns along South Riverside Avenue/East Kemper Road.

USACE is currently conducting a study to investigate cost-effective and environmentally acceptable means to prevent active erosion at sites along the Little Miami River that are threatening public infrastructure.

Streambank erosion has impacted the road and roadway infrastructure and, as a result, vehicle occupant safety and utility lines. The goal of the project is to reduce current risks to public infrastructure and the life and safety of residents.

At this time, project design is expected to start in early 2025, with construction expected to start late 2025. However, these timeframes are subject to change based on the study's findings.

*Want additional information about the study? Contact (502) 315-6767 or [Loveland.USACE@usace.army.mil](mailto:Loveland.USACE@usace.army.mil)*



Upper: Riverside Drive curb drainage at area prone to flooding.  
Lower: Failed pavement patch on East Kemper Road.

# Reconfiguring Harrison Avenue

Thanks in part to grant funding, work has begun to improve Harrison Avenue near Nisbet Park.

Harrison is being widened from 16-20 feet to 22 feet between North Karl Brown Way and Railroad Avenue.

Additionally, Harrison will be realigned to the north by approximately 70 feet to improve road and parking lot access. The wider road will improve the turning radius from North Karl Brown Way.



For safety, Harrison Avenue will be widened to improve road and parking lot access.

"These improvements will positively impact safety in this area and along the Little Miami Scenic Bike Trail, which has been a concern of the city's first responders," explained David Kennedy, City Manager.

The project includes installation of sidewalks, curbs, catch basins, road signs and pavement, as well as storm sewer and drainage improvements. Storm sewers will be repaired along Harrison, North Karl Brown, and First Street. Much of the storm sewer work requires a portion of Nisbet Park to be excavated.

Construction costs are estimated at \$462,600. To offset the cost, city staff obtained \$370,000 in grant funding from the Ohio Public Works Commission.

This large project's estimated completion is Spring 2024. Once complete, the city can move forward with implementing future projects of the Nisbet Park Master Plan — new amphitheater, expansion of the walking paths, a sculpture, historical markers, and improved river access.

## AROUND TOWN

### Honoring Hometown Heroes

The city's new Hometown Hero Military Banner Program will debut in November.

This program salutes local men and women currently serving or who have served in the United States Armed Forces. Each banner honors a specific person and includes their photo, name, rank, branch of service, years of service, and any awards received.

All the heroes have lived within the City of Loveland and/or have graduated from the Loveland City School District.

Banners will be displayed on utility poles along State Route 48 from Broadway Street to the Oak Street intersection.

To help kickstart this program, the Duke Energy Foundation provided a \$7,500 grant. The donation helped to offset the banners' printing, mounting hardware, and installation fees — ultimately reducing the banner cost to families.

"We are pleased to help shine a light on the great work of the City of Loveland and its Veterans' Memorial Committee," said Chad Shaffer of Duke Energy.

Additionally, the American Legion Post #256 donated \$3,000 toward the inspection and approval of utility poles.

Approximately 30 banners are part of the first printing batch.

*Interested in purchasing a banner? Contact (513) 707-1437*



### Community Christmas Tree Lighting

Dec. 2 - 4-8 p.m. - Historic Downtown

Feel the holiday spirit! There will be a tree lighting ceremony, live entertainment, a drone show, penguin visits, and more festive fun.



### Christmas in Loveland

Dec. 16 - 4-8 p.m. - Historic Downtown

At this outdoor event hosted by the Little Miami River Chamber Alliance, visitors can enjoy carriage rides, treats, and holiday cheer.



### Hearts Afire Weekend

Feb. 9-11, 2024

Celebrate the "Sweetheart of Ohio!" Don't miss the ice sculptures, street performers, pageant, and love-inspired activities for all ages.

LOVIN LIFE  
LOVELAND, OHIO

[LovinLifeLoveland.com](http://LovinLifeLoveland.com)



Discover  
More Events!



Scan Now



# City of Loveland

120 West Loveland Avenue  
Loveland, OH 45140  
(513) 683-0150  
LovelandOH.gov  
LovinLifeLoveland.com



**Building & Zoning**  
(513) 707-1447

**City Manager's Office**  
(513) 707-1437

**Local Income Taxes**  
(513) 707-1452

**Fire/EMS/Police (Non-Emergency)**  
(513) 677-7000

**Public Works**  
(513) 683-0150

**Utilities Billing**  
(513) 707-1451

## Want Monthly News?

Receive city news straight to your inbox! Scan or visit LovelandOH.gov to sign up for the City of Loveland's monthly e-newsletter.



**Scan Now**

**Oct. 31  
6 - 8 p.m.**

**Trick-or-Treat Hours**

---

Non-Profit Org.  
U.S. Postage  
PAID  
Loveland, OH  
Permit No. 0000

---

## COMMUNITY REMINDERS

### "How do I report a concern?"

For non-emergency concerns, residents can visit the virtual "Report It" tool. Report a building code violation, pothole, street sign repair, traffic signal complaint, etc. Visit [LovelandOH.gov/requesttracker.aspx](http://LovelandOH.gov/requesttracker.aspx).

### Upcoming City Services

Oct. 9: Fall Brush Collection begins *(Curbside)*

Oct. 16: Fall Leaf Collection begins *(Curbside)*

Nov. 27 - Jan. 12: Holiday Light Recycling *(City Hall)*

Jan. 2 - 12: Christmas Tree Collection *(Curbside)*

Questions about city services?

Email [AskLoveland@lovelandoh.gov](mailto:AskLoveland@lovelandoh.gov).

### City Council Meetings

Residents are invited to attend City Council meetings on the second and fourth Tuesday of each month at 7 p.m. at City Hall. Meeting agendas and minutes are available at [LovelandOH.gov/200/public-meetings](http://LovelandOH.gov/200/public-meetings).